

# SUMMARY OF QUANTITIES

PROJECT NO.	SHEET NO.	TOTAL NO.
11CR.20031.19, 11CR.20051.19		

PROJECT	COUNTY	MAP	ROUTE	DESCRIPTION	TPP	FINAL SURFACE TESTING REQUIRED	LENGTH	WIDTH	ASPHALT SURFACE TREATMENT, MAT & SEAL	ASPHALT SURFACE TREATMENT, SPLIT SEAL	ASPHALT SURFACE TREATMENT, TRIPLE SEAL	ASPHALT SURFACE TREATMENT, TRIPLE SEAL (LIGHTWEIGHT AGGREGATE)	
NO		NO			NO		MI	FT	SY	SY	SY	SY	
11CR.20031.19	Alleghany	3	SR 1106	FROM US 21 TO US 21	1	NO	1.6	18		16,896			
11CR.20031.19	Alleghany	4	SR 1108	FROM SR 1106 TO BLUE RIDGE PARKWAY	1	NO	1.2	18		12,672			
11CR.20031.19	Alleghany	5	SR 1109	FROM SR 1108 TO SR 1202	1	NO	0.5	18		5,280			
11CR.20031.19	Alleghany	6	SR 1111	FROM US 21 TO BLUE RIDGE PARKWAY	1	NO	1.7	20		19,947			
11CR.20031.19	Alleghany	7	SR 1112	FROM SR 1111 TO DEAD END	1	NO	0.4	18		4,224			
11CR.20031.19	Alleghany	8	SR 1202	FROM SR 1106 TO DEAD END	1	NO	0.2	18		2,112			
<b>TOTAL FOR PROJ NO. 11CR.20031.19</b>							<b>5.6</b>			<b>61,131</b>			
11CR.20051.19	Ashle	9	SR 1324	FROM SR 1334 TO SR 1352	2	NO	2.1	18			22,176		
11CR.20051.19	Ashle	10	SR 1122	FROM SR 1121 TO NC 88	3	NO	1.22	18	12,883				
11CR.20051.19	Ashle	11	SR 1594	FROM BEGIN PVMT TO US 221	2	NO	0.44	16			4,130		
11CR.20051.19	Ashle	12	SR 1334	FROM SR 1324 TO SR 1332	3	NO	1.73	18	18,269				
11CR.20051.19	Ashle	13	SR 1677	FROM SR 1511 TO EOM	2	NO	0.09	16			845		
11CR.20051.19	Ashle	14	SR 1118	FROM NC 88 TO SR 1274	3	NO	1.95	18	20,592				
11CR.20051.19	Ashle	15	SR 1308	FROM NC 88 TO SR 1307	2	NO	0.54	18			5,702		
11CR.20051.19	Ashle	16	SR 1516	FROM SR 1521 TO NC 194	3	NO	1.3	20	15,253				
11CR.20051.19	Ashle	17	SR 1194	FROM SR 1125 TO EOM	2	NO	0.82	17			8,178		
11CR.20051.19	Ashle	18	SR 1675	FROM NC 16 TO BEGIN 14' PVMT	3	NO	0.37	18	3,907				
11CR.20051.19	Ashle	19	SR 1542	FROM NC 16 TO SCHOOL	2	NO	0.61	18			6,442		
11CR.20051.19	Ashle	20	SR 1675	FROM BEGIN 14' PVMT TO DEAD END	3	NO	0.15	14	1,232				
11CR.20051.19	Ashle	21	SR 1679	FROM SR 1580 TO DEAD END	2	NO	0.32	16			3,204		
11CR.20051.19	Ashle	22	SR 1180	FROM SR 1181 TO MP 1.05	3	NO	1.05	20	12,320				
11CR.20051.19	Ashle	23	SR 1145	FROM SR 1146 TO SR 1143	2	NO	0.67	20			7,861		
11CR.20051.19	Ashle	24	SR 1325	FROM SR 1389 TO SR 1322	3	NO	0.93	20	10,912				
11CR.20051.19	Ashle	25	SR 1233	FROM SR 1142 TO EOM	2	NO	0.24	18			2,534		
11CR.20051.19	Ashle	26	SR 1322	FROM SR 1323 TO SR 1315	3	NO	0.41	20	4,811				
11CR.20051.19	Ashle	27	SR 1307	FROM SR 1308 TO EOM	2	NO	1.64	16			15,394		
11CR.20051.19	Ashle	28	SR 1195	FROM SR 1248 TO BEGIN 16' PVMT	3	NO	0.61	20	7,157				
11CR.20051.19	Ashle	29	SR 1207	FROM US 221 TO EOM	2	NO	0.48	18			5,269		
11CR.20051.19	Ashle	30	SR 1195	FROM BEGIN 16' PVMT TO EOM	3	NO	0.25	16	2,347				
11CR.20051.19	Ashle	31	SR 1308	FROM SR 1307 TO SR 1311	2	NO	0.34	20			3,989		
11CR.20051.19	Ashle	32	SR 1100	FROM SR 1106 TO SR 1284	3	NO	1.1	16	10,325				
11CR.20051.19	Ashle	34	SR 1181	FROM BRIDGE TO END PVMT	2	NO	1.4	18			14,784		
11CR.20051.19	Ashle	35	SR 1100	FROM WATAUGA CO LINE TO SR 1106	3	NO	0.54	18	5,702				
11CR.20051.19	Ashle	36	SR 1145	FROM US 221 TO SR 1146	3	NO	0.97	20	11,381				
11CR.20051.19	Ashle	37	SR 1181	FROM END PVMT TO SR 1183	3	NO	1.58	18	16,685				
<b>TOTAL FOR PROJ NO. 11CR.20051.19</b>							<b>23.85</b>		<b>153,776</b>		<b>100,508</b>		
<b>GRAND TOTAL</b>								<b>29.45</b>		<b>153,776</b>	<b>61,131</b>	<b>100,508</b>	

PROJECT NO.	SHEET NO.	TOTAL NO.
11CR.20031.19, 11CR.20051.19		

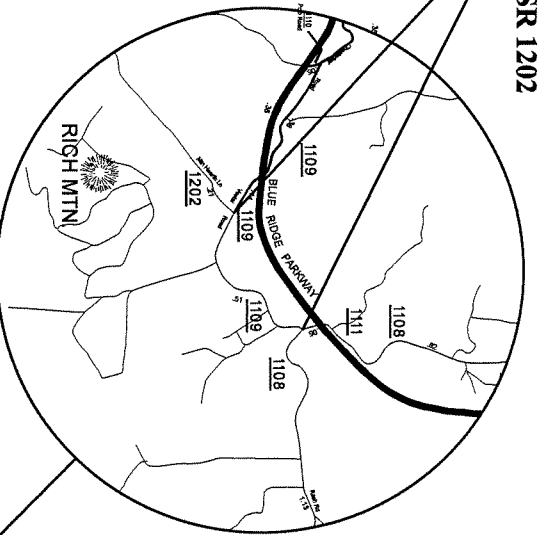
## THERMOPLASTIC AND PAINT QUANTITIES

PROJECT	COUNTY	MAP	ROUTE	DESCRIPTION	LENGTH	WIDTH	481000000-E			483500000-E	484000000-N	490500000-N
							4" WHITE PAINT	4" YELLOW PAINT	24" WHITE PAINT			
NO		NO					LF	LF	LF	EA	EA	
11CR.20031.19	Alleghany	3	SR 1106	FROM US 21 TO US 21	1.6	18	33,792	33,792				
11CR.20031.19	Alleghany	4	SR 1108	FROM SR 1106 TO BLUE RIDGE PARKWAY	1.2	18	25,344	25,344				
11CR.20031.19	Alleghany	5	SR 1109	FROM SR 1108 TO SR 1202	0.5	18	10,560	10,560				
11CR.20031.19	Alleghany	6	SR 1111	FROM US 21 TO BLUE RIDGE PARKWAY	1.7	20	35,904	35,904				
11CR.20031.19	Alleghany	7	SR 1112	FROM SR 1111 TO DEAD END	0.4	18						
11CR.20031.19	Alleghany	8	SR 1202	FROM SR 1106 TO DEAD END	0.2	18						
<b>TOTAL FOR PROJ NO. 11CR.20031.19</b>							<b>105,600</b>	<b>105,600</b>				
							<b>211,200</b>					

11CR.20051.19	Ashe	9	SR 1324	FROM SR 1334 TO SR 1352	2.1	18	44,352	44,352				
11CR.20051.19	Ashe	10	SR 1122	FROM SR 1121 TO NC 88	1.22	18	25,766	25,766				
11CR.20051.19	Ashe	11	SR 1594	FROM BEGIN PVMT TO US 221	0.44	16						
11CR.20051.19	Ashe	12	SR 1334	FROM SR 1324 TO SR 1332	1.73	18	36,538	36,538				
11CR.20051.19	Ashe	13	SR 1677	FROM SR 1511 TO EOM	0.09	16						
11CR.20051.19	Ashe	14	SR 1118	FROM NC 88 TO SR 1274	1.95	18	41,184	41,184				
11CR.20051.19	Ashe	15	SR 1308	FROM NC 88 TO SR 1307	0.54	18	11,405	11,405				
11CR.20051.19	Ashe	16	SR 1516	FROM SR 1521 TO NC 194	1.3	20	27,456	27,456				
11CR.20051.19	Ashe	17	SR 1194	FROM SR 1125 TO EOM	0.82	17						
11CR.20051.19	Ashe	18	SR 1675	FROM NC 16 TO BEGIN 14' PVMT	0.37	18						
11CR.20051.19	Ashe	19	SR 1542	FROM NC 16 TO SCHOOL	0.61	18						
11CR.20051.19	Ashe	20	SR 1675	FROM BEGIN 14' PVMT TO DEAD END	0.15	14						
11CR.20051.19	Ashe	21	SR 1679	FROM SR 1580 TO DEAD END	0.32	16						
11CR.20051.19	Ashe	22	SR 1180	FROM SR 1181 TO MP 1.05	1.05	20	22,176	22,176				
11CR.20051.19	Ashe	23	SR 1145	FROM SR 1146 TO SR 1143	0.67	20	14,150	14,150				
11CR.20051.19	Ashe	24	SR 1325	FROM SR 1389 TO SR 1322	0.93	20	19,642	19,642				
11CR.20051.19	Ashe	25	SR 1233	FROM SR 1142 TO EOM	0.24	18						
11CR.20051.19	Ashe	26	SR 1322	FROM SR 1323 TO SR 1315	0.41	20	8,659	8,659				
11CR.20051.19	Ashe	27	SR 1307	FROM SR 1308 TO EOM	1.64	16	34,637	34,637				
11CR.20051.19	Ashe	28	SR 1195	FROM SR 1248 TO BEGIN 16' PVMT	0.61	20						
11CR.20051.19	Ashe	29	SR 1207	FROM US 221 TO EOM	0.48	18						
11CR.20051.19	Ashe	30	SR 1195	FROM BEGIN 16' PVMT TO EOM	0.25	16						
11CR.20051.19	Ashe	31	SR 1308	FROM SR 1307 TO SR 1311	0.34	20	7,181	7,181				
11CR.20051.19	Ashe	32	SR 1100	FROM SR 1106 TO SR 1284	1.1	16						
11CR.20051.19	Ashe	34	SR 1181	FROM BRIDGE TO END PVMT	1.4	18	29,568	29,568				
11CR.20051.19	Ashe	35	SR 1100	FROM WATAUGA CO LINE TO SR 1106	0.54	18	11,405	11,405				
11CR.20051.19	Ashe	36	SR 1145	FROM US 221 TO SR 1146	0.97	20	20,486	20,486				
11CR.20051.19	Ashe	37	SR 1181	FROM END PVMT TO SR 1183	1.58	18	33,370	33,370				
<b>TOTAL FOR PROJ NO. 11CR.20051.19</b>							<b>387,975</b>	<b>387,975</b>				
							<b>775,950</b>					

<b>GRAND TOTAL</b>							<b>29,45</b>	<b>493,575</b>	<b>493,575</b>			
							<b>987,150</b>					

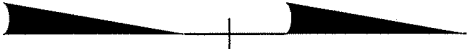
MAP #5 SR 1109  
FROM SR 1108 TO SR 1202



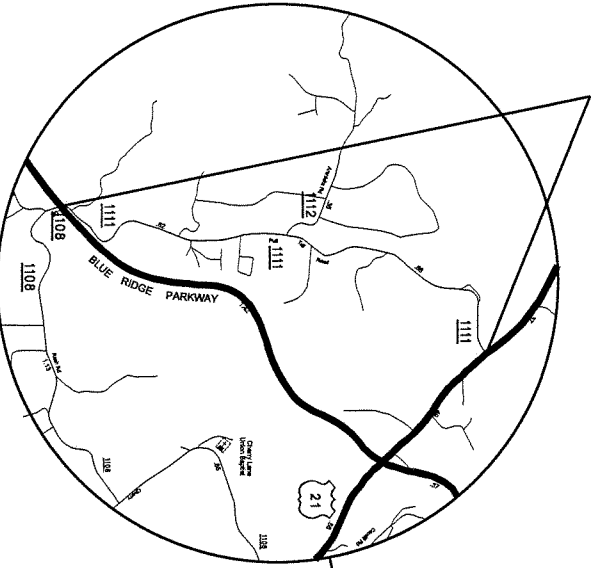
STATE OF NORTH CAROLINA  
DIVISION OF HIGHWAYS

# ALLEGHANY COUNTY

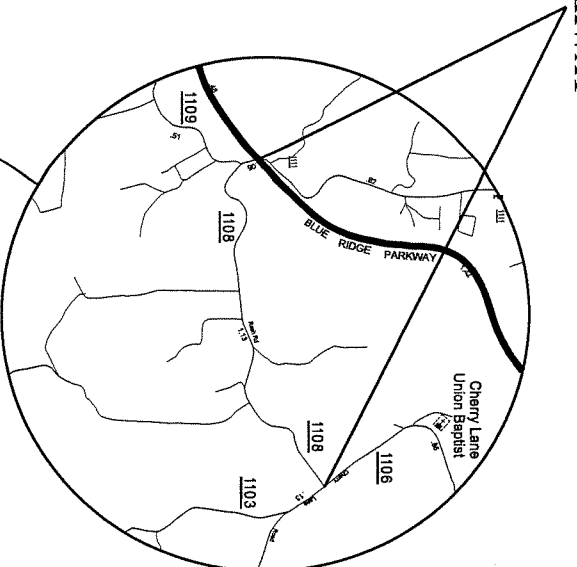
ASPHALT SURFACE TREATMENT



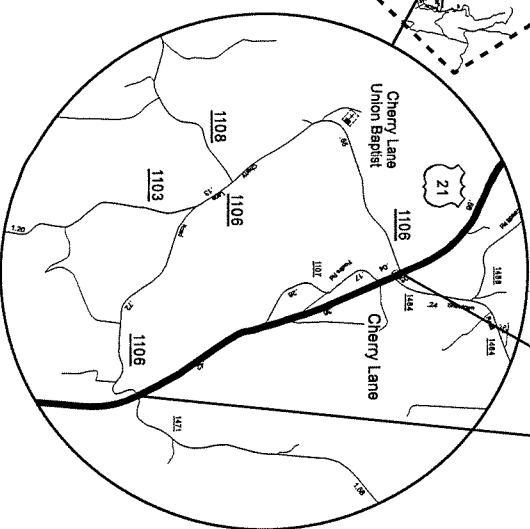
MAP #6 SR 1111  
FROM US 21 TO BLUE  
RIDGE PARKWAY



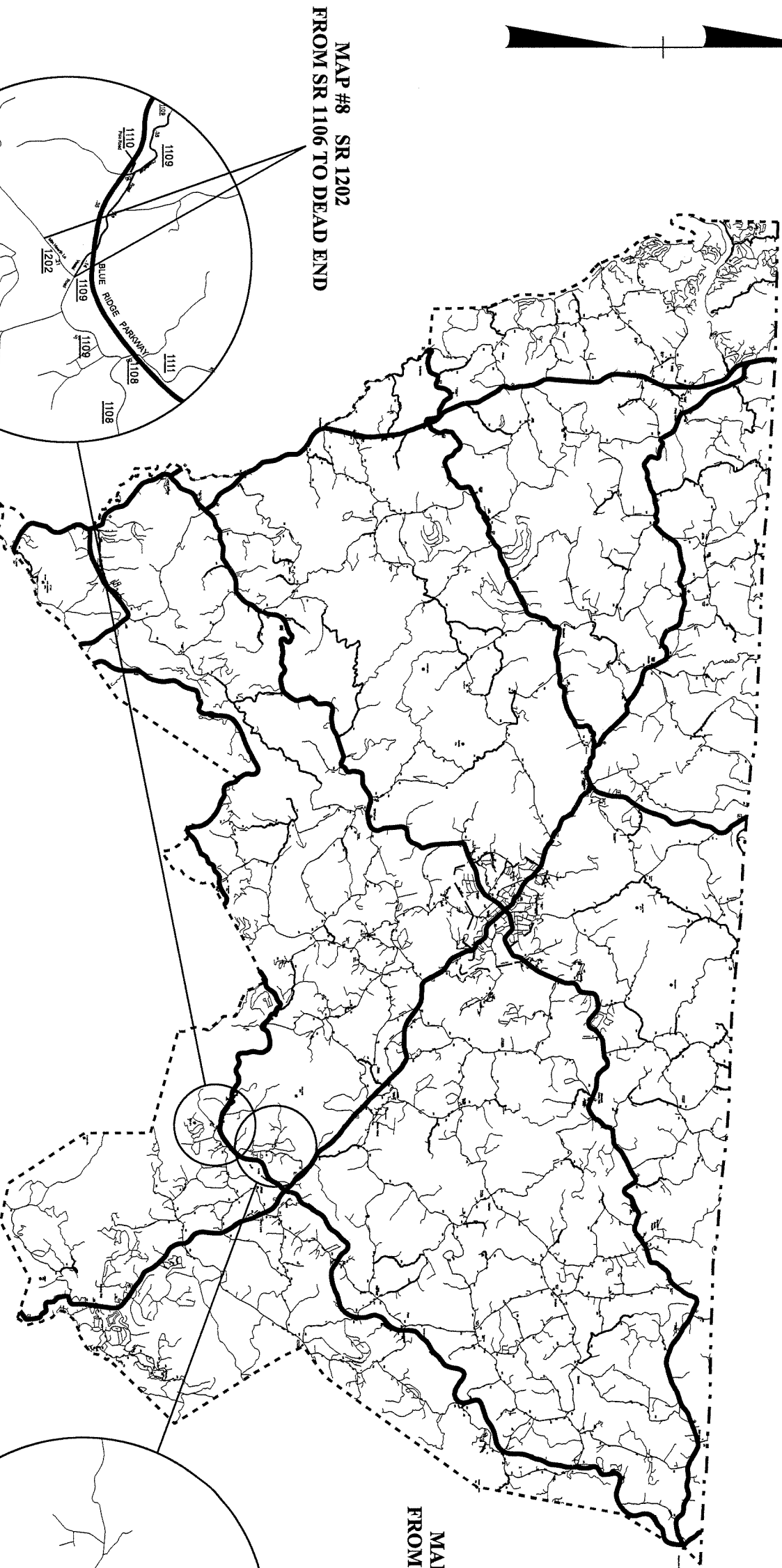
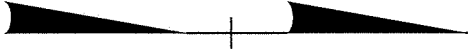
MAP #4 SR 1108  
FROM SR 1106 TO BLUE  
RIDGE PARKWAY



MAP #3 SR 1106  
FROM US 21 TO US 21

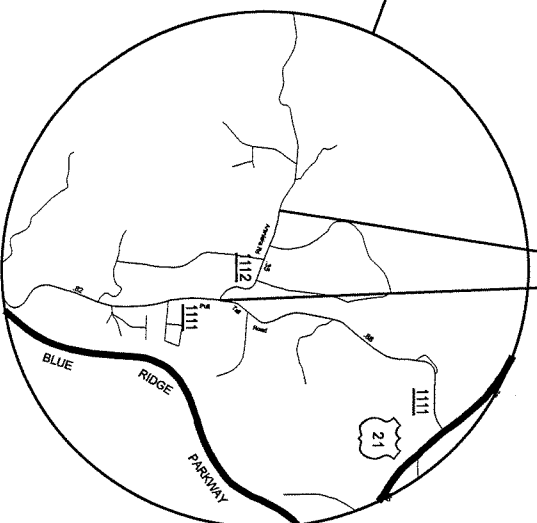
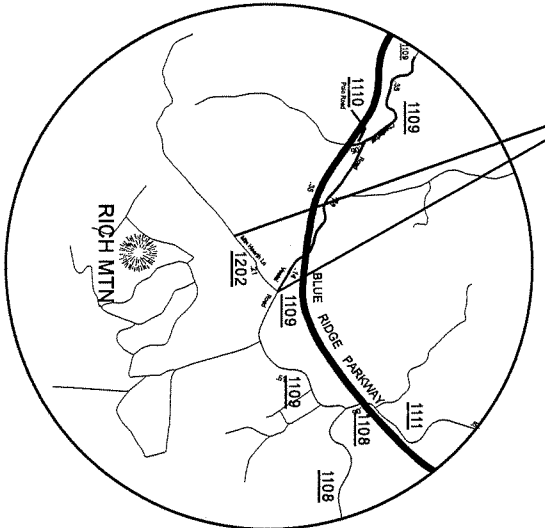


STATE OF NORTH CAROLINA  
DIVISION OF HIGHWAYS  
**ALLEGHANY COUNTY**  
ASPHALT SURFACE TREATMENT

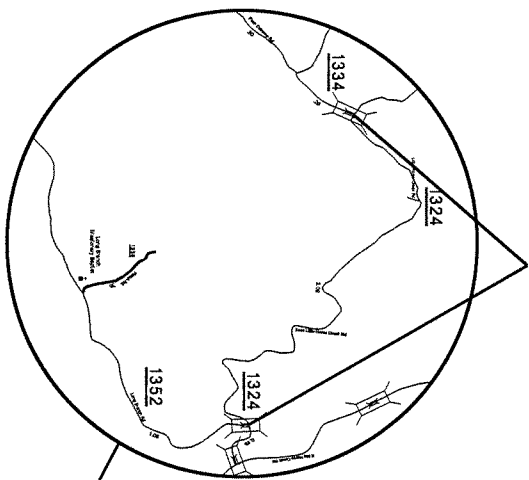


MAP #8 SR 1202  
FROM SR 1106 TO DEAD END

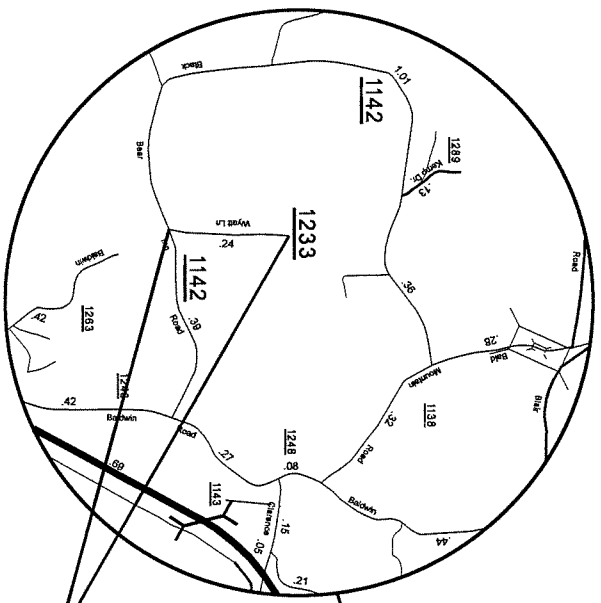
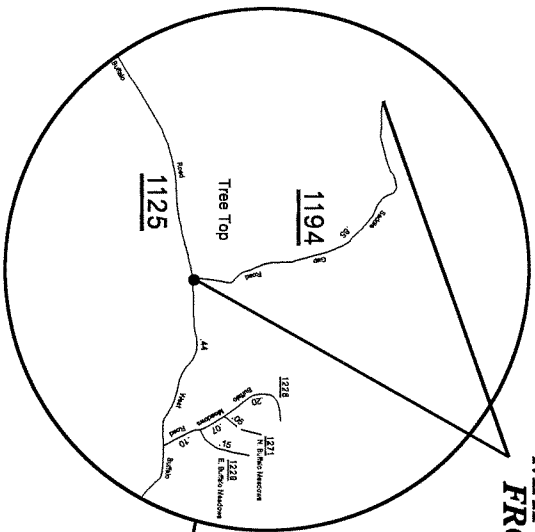
MAP #7 SR 1112  
FROM SR 1111 TO DEAD END



MAP #9 SR 1324  
FROM SR 1334 TO SR 1352



MAP #17 SR 1194  
FROM SR 1125 TO EOM



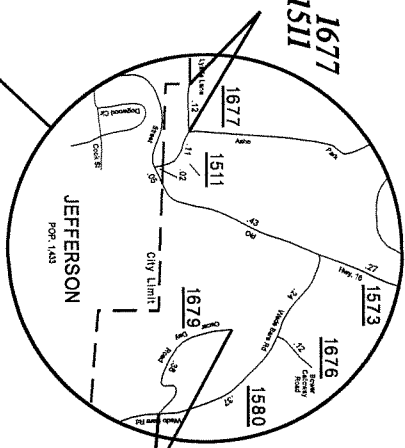
MAP #25 SR 1233  
FROM SR 1142 TO EOM

STATE OF NORTH CAROLINA  
DIVISION OF HIGHWAYS

# ASHE COUNTY

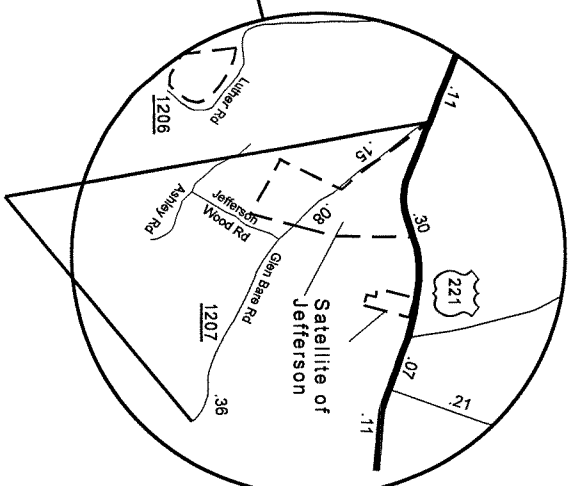
ASPHALT SURFACE TREATMENT

MAP #13 SR 1677  
FROM SR 1511 TO EOM

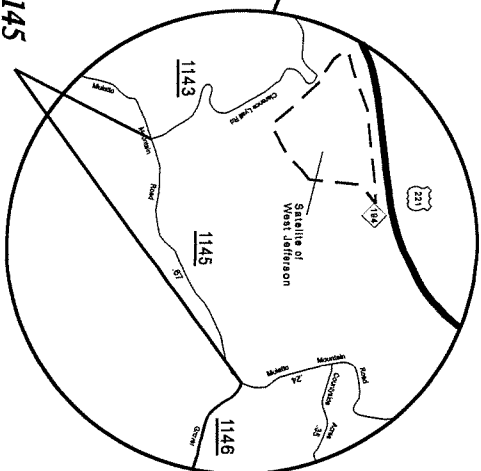


MAP #21 SR 1679  
FROM SR 1580 TO DEAD END

MAP #29 SR 1207  
FROM US 221 TO EOM



MAP #23 SR 1145  
FROM SR 1146 TO SR 1143



PROJECT REFERENCE NO. 11CR2005119	SHEET NO.
--------------------------------------	-----------

STATE OF NORTH CAROLINA

DIVISION OF HIGHWAYS

**ASHE COUNTY**

ASPHALT SURFACE TREATMENT

MAP #31 SR 1308  
FROM SR 1307  
TO SR 1311

MAP #15 SR 1308  
FROM NC 88  
TO SR 1307

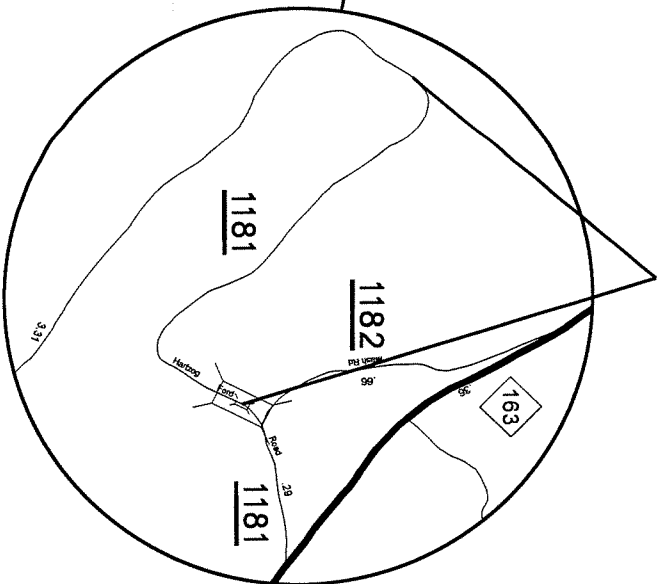
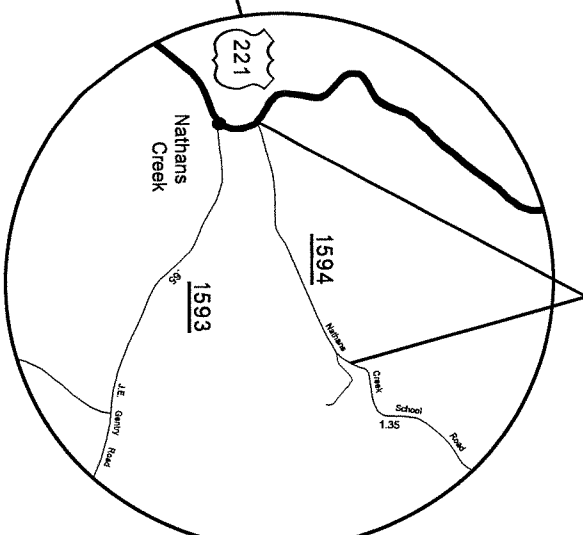
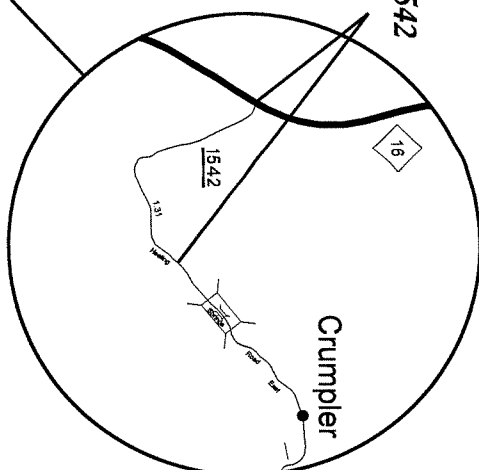
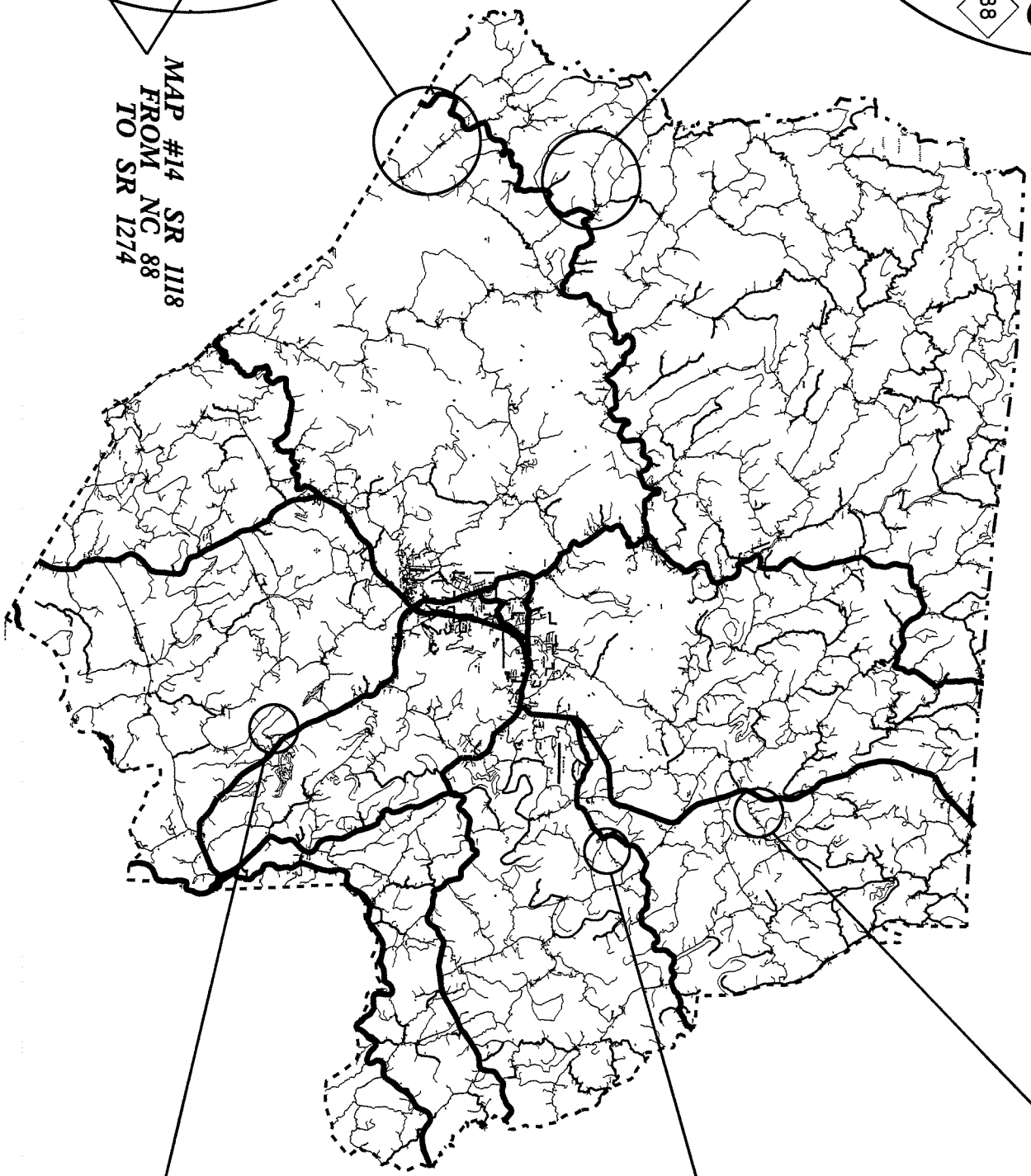
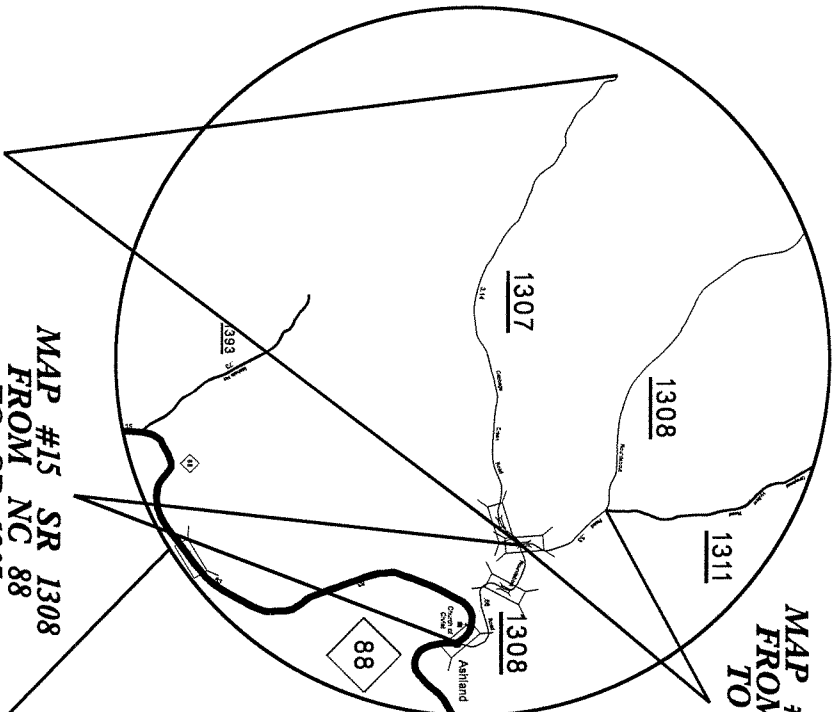
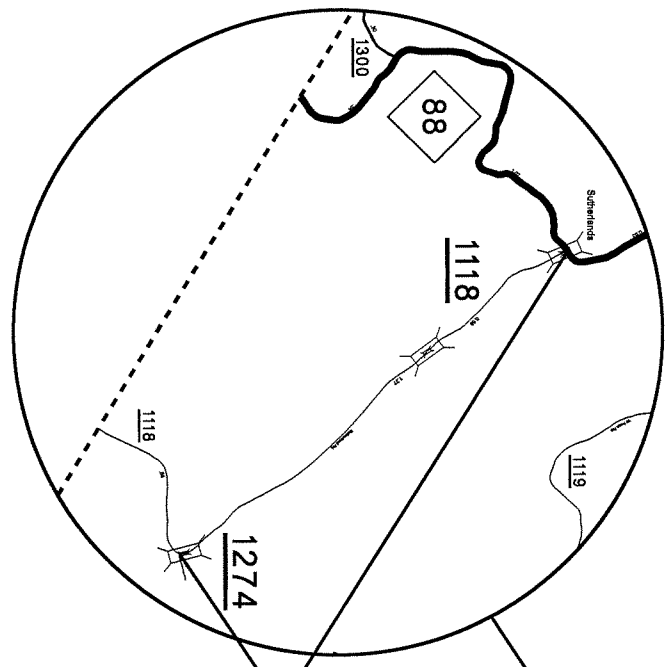
MAP #27 SR 1307  
FROM SR 1308 TO EOM

MAP #14 SR 1118  
FROM NC 88  
TO SR 1274

MAP #19 SR 1542  
FROM NC 16  
TO SCHOOL

MAP #11 SR 1594  
FROM BEGIN PYMT TO US 221

MAP #34 SR 1181  
FROM BRIDGE TO END PYMT



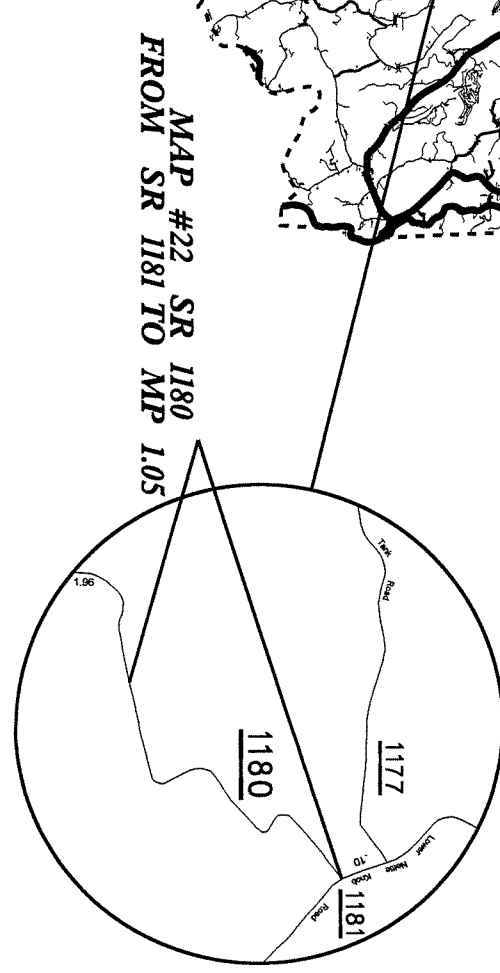
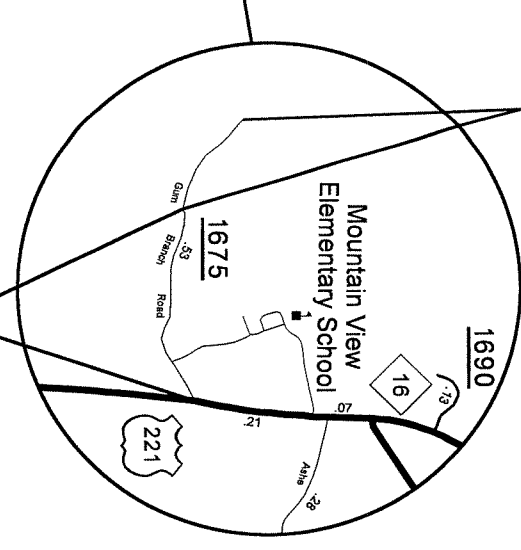
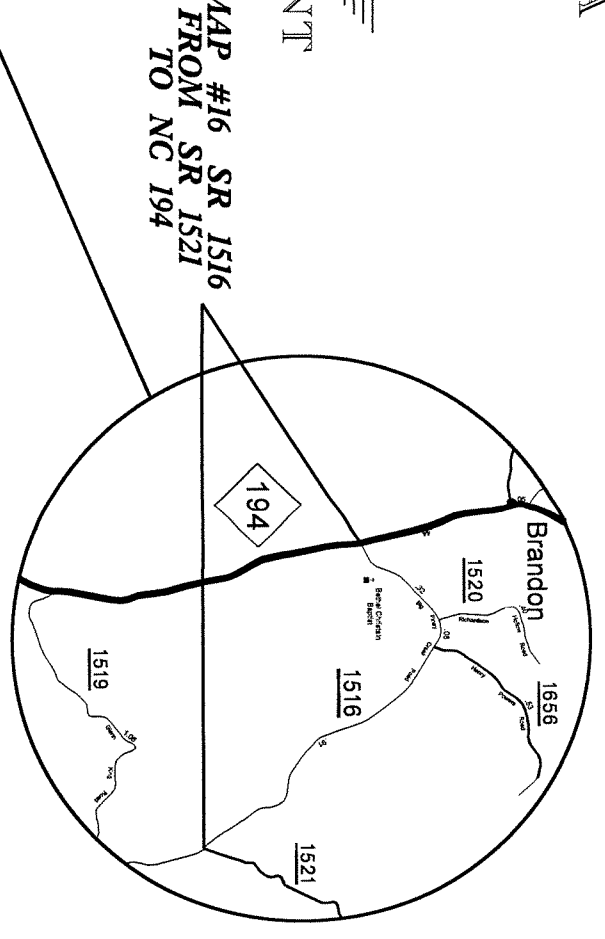
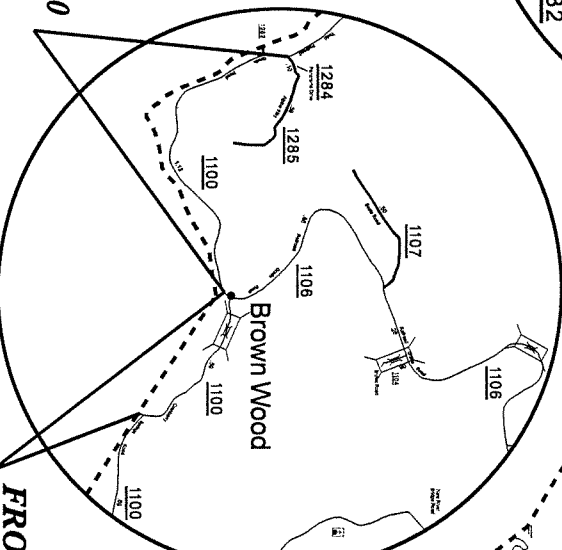
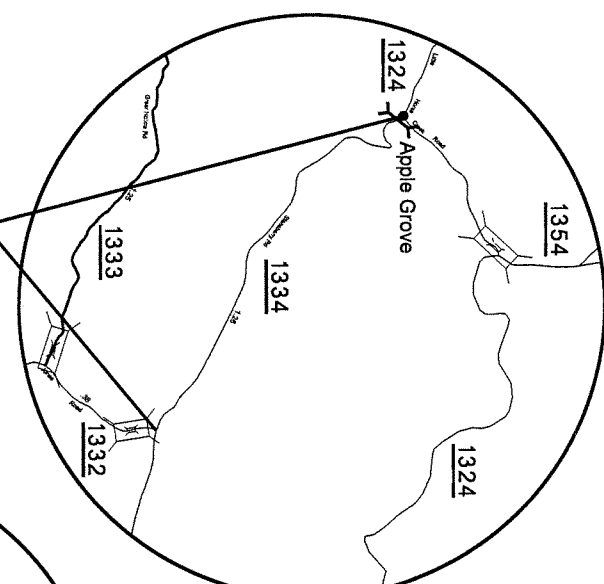
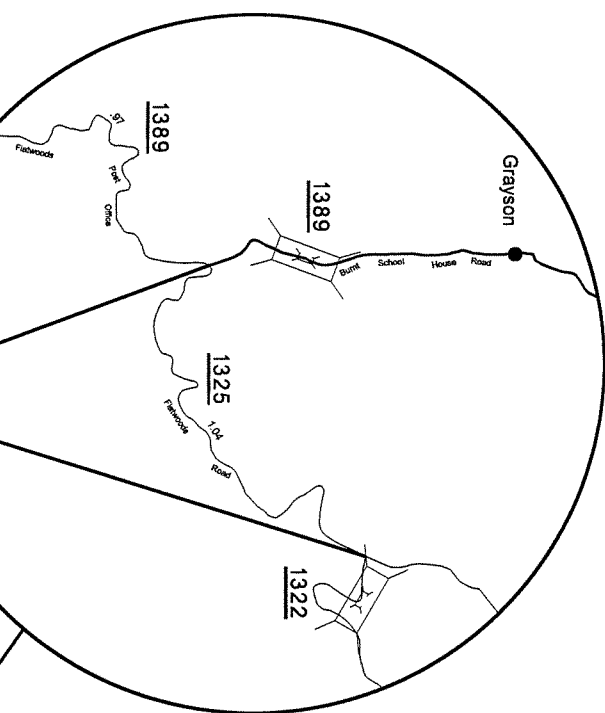
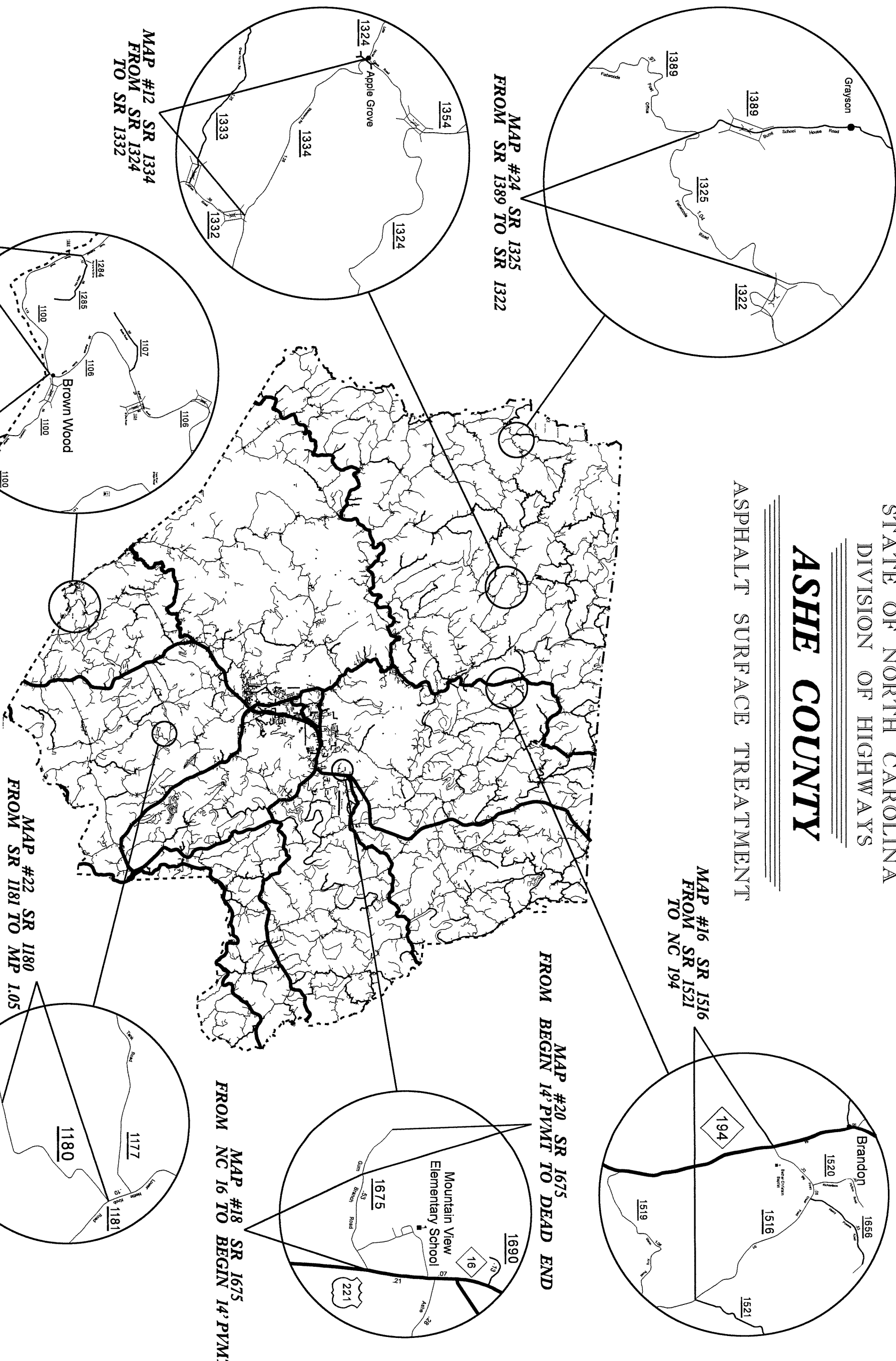


STATE OF NORTH CAROLINA

DIVISION OF HIGHWAYS

# ASHE COUNTY

ASPHALT SURFACE TREATMENT



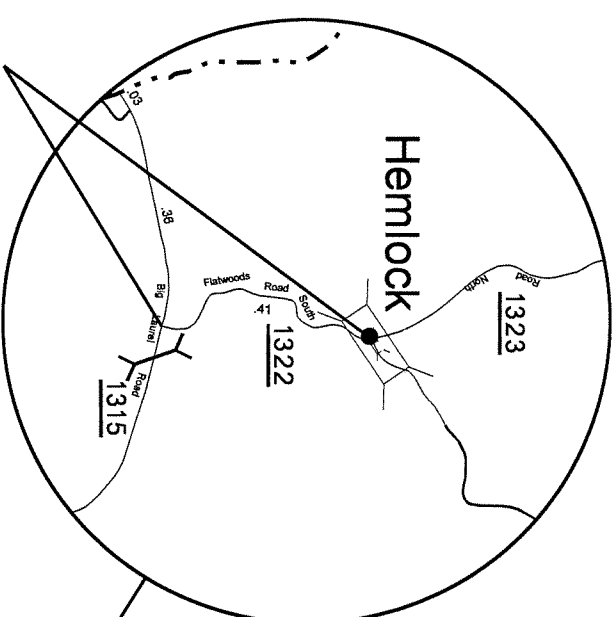
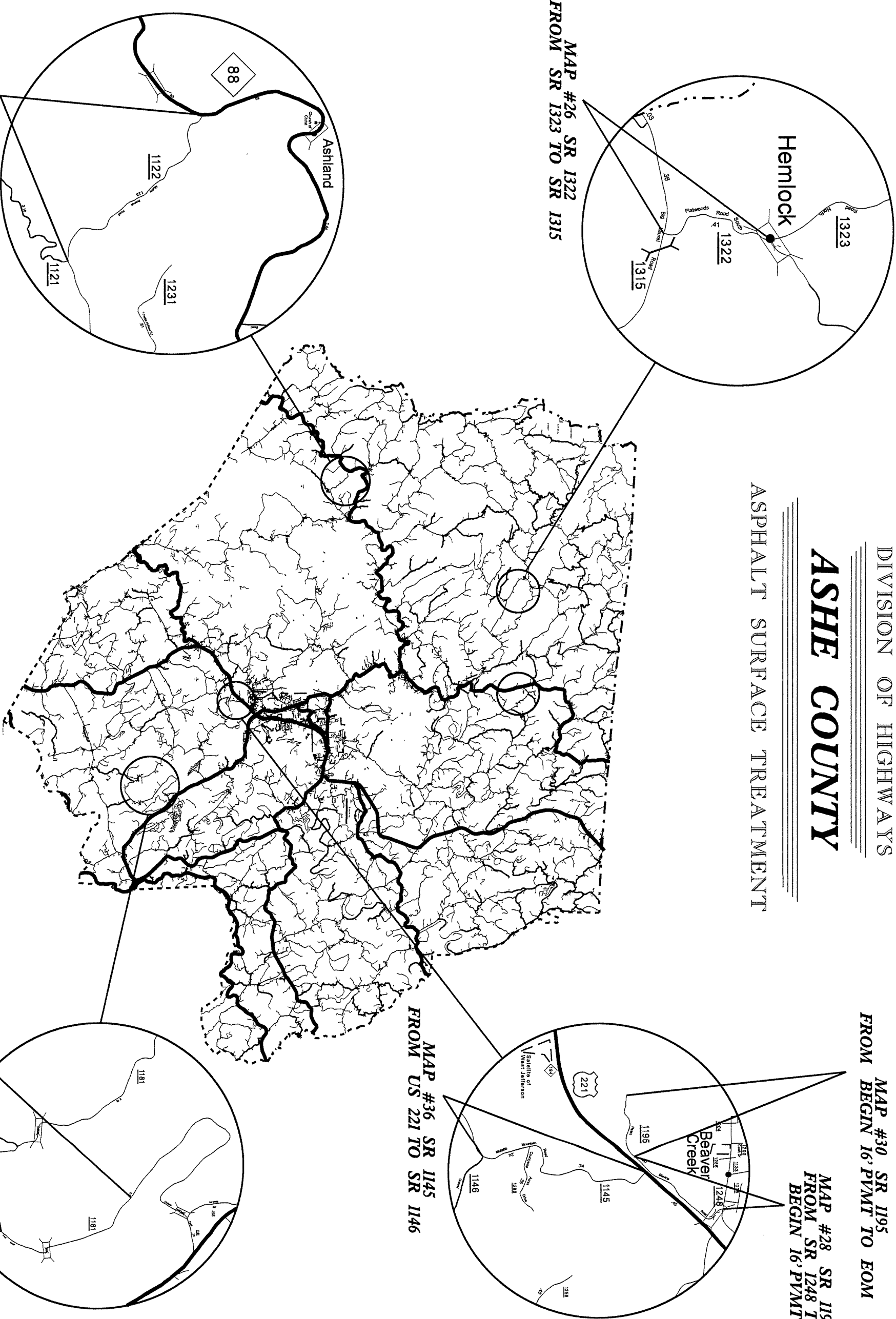
MAP #35 SR 1100  
FROM WATAUGA CO LINE  
TO SR 1106

MAP #18 SR 1675  
FROM NC 16 TO BEGIN 14' PVMT

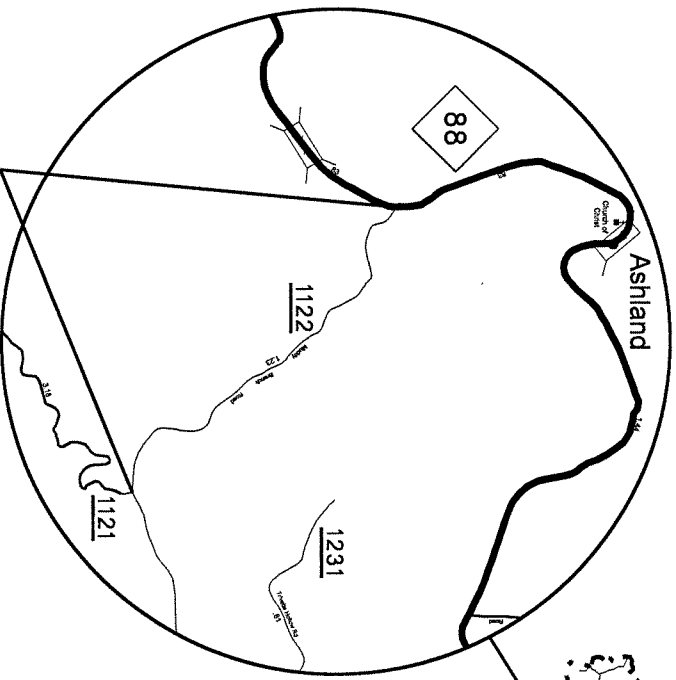
STATE OF NORTH CAROLINA  
DIVISION OF HIGHWAYS

**ASHE COUNTY**

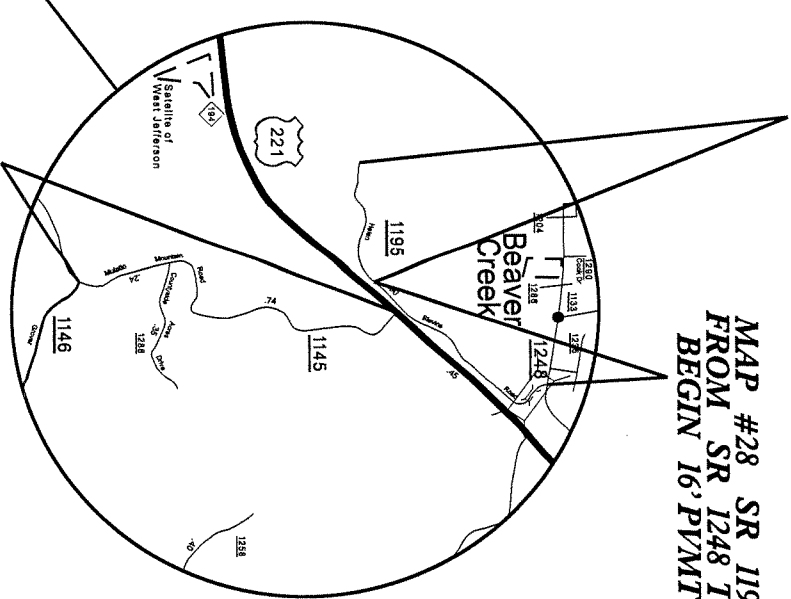
ASPHALT SURFACE TREATMENT



MAP #26 SR 1322  
FROM SR 1323 TO SR 1315



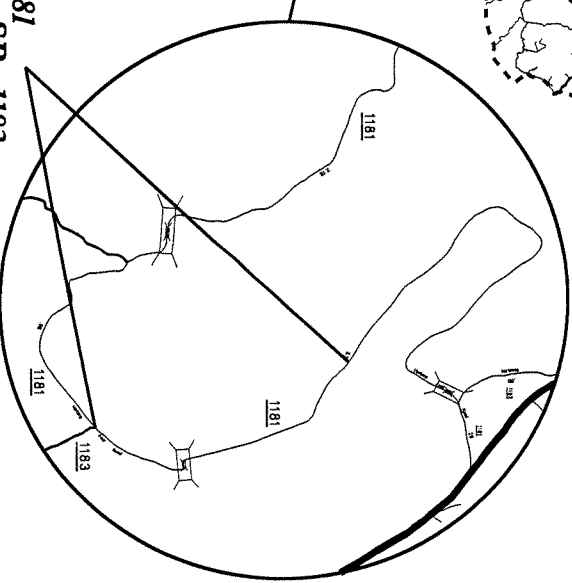
MAP #10 SR 1122  
FROM SR 1121 TO NC 88



MAP #30 SR 1195  
FROM BEGIN 16' PVMT TO EOM

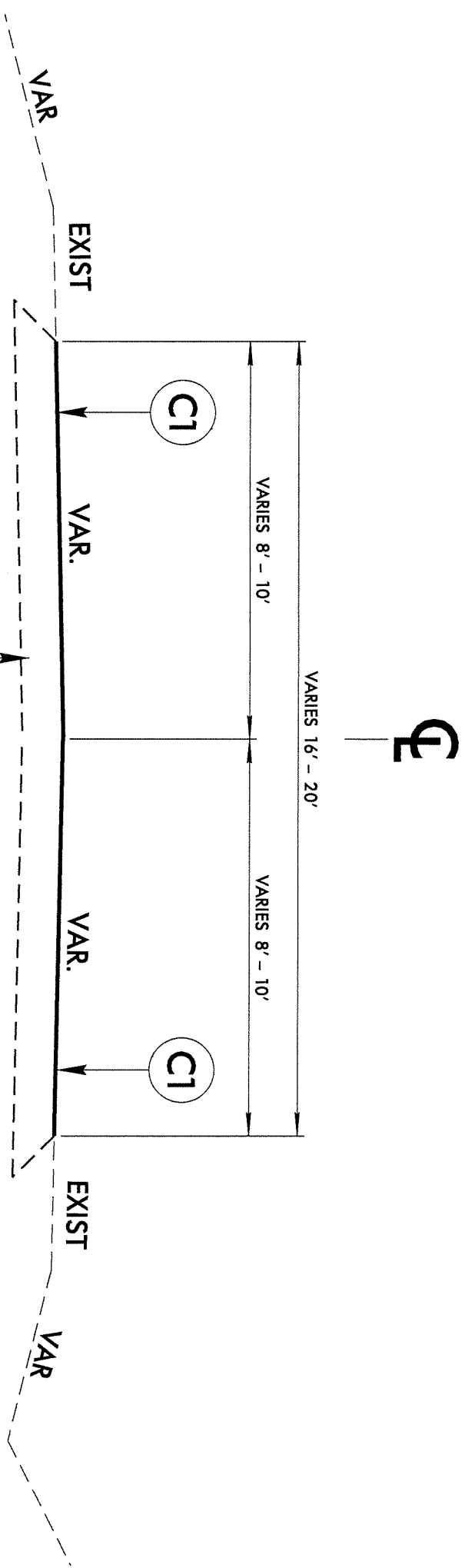
MAP #28 SR 1195  
FROM SR 1248 TO  
BEGIN 16' PVMT

MAP #36 SR 1145  
FROM US 221 TO SR 1146



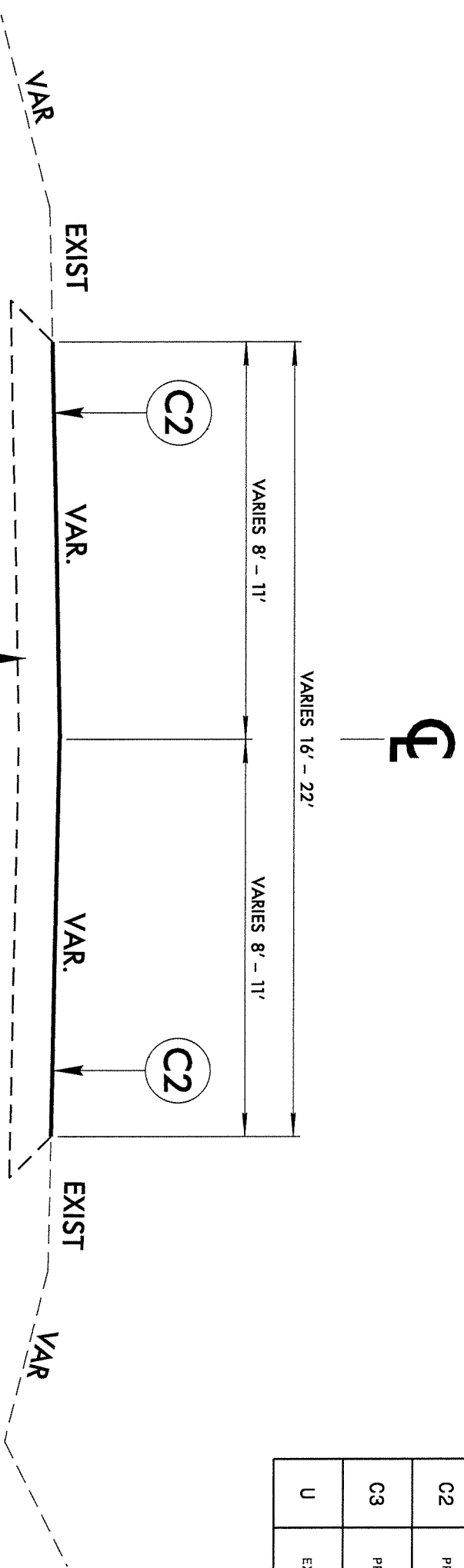
MAP #37 SR 1181  
FROM END PVMT TO SR 1183





TYPICAL SECTION NO. 1

PAVEMENT SCHEDULE	
C1	PROP. ASPHALT SURFACE TREATMENT, SPLIT SEAL
C2	PROP. ASPHALT SURFACE TREATMENT, TRIPLE SEAL
C3	PROP. ASPHALT SURFACE TREATMENT, MAT & SEAL
U	EXISTING PAVEMENT



TYPICAL SECTION NO. 2

**ALLEGANY & ASHE COUNTIES**  
ASPHALT SURFACE TREATMENT  
RESURFACING

DIVISION II

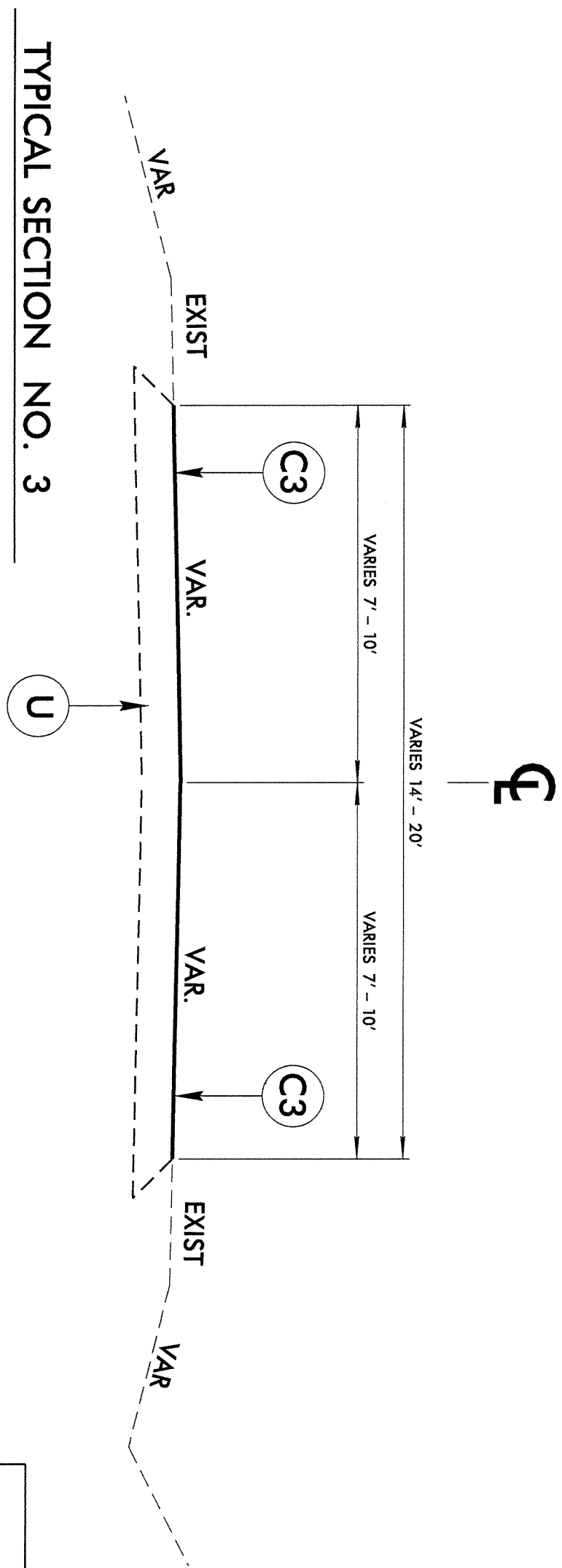
REVISIONS	INT.	DATE

**DIVISION OF HIGHWAYS**  
DEPARTMENT OF TRANSPORTATION

N.C. DEPARTMENT of TRANSPORTATION  
DIVISION of HIGHWAYS  
DIVISION ELEVEN

SCALE: N/A	DATE: 3/2012
PREPARED BY: J. L. LAWS	
REVIEWED BY:	





PAVEMENT SCHEDULE	
C1	PROP. ASPHALT SURFACE TREATMENT, SPLIT SEAL
C2	PROP. ASPHALT SURFACE TREATMENT, TRIPLE SEAL
C3	PROP. ASPHALT SURFACE TREATMENT, MAT & SEAL
U	EXISTING PAVEMENT

**ALLEGHANY & ASHE COUNTIES**  
**ASPHALT SURFACE TREATMENT**  
**RESURFACING**

---

DIVISION II

REVISIONS	INT.	DATE

---

**N.C. DEPARTMENT OF TRANSPORTATION**  
**DIVISION of HIGHWAYS**  
**DIVISION ELEVEN**

DIVISION OF HIGHWAYS  
 STATE OF NORTH CAROLINA  
 DEPARTMENT OF TRANSPORTATION

SCALE: N/A	DATE: 3/2012
PREPARED BY: J. L. LAWS	
REVIEWED BY:	
REVISION BY:	